



- ☒ Passenger Lifts
- ☒ Goods Lifts
- ☒ Hospital Lifts
- ☒ Capsule Lifts
- ☒ Hydraulic Lifts
- ☒ MRL Lifts
- ☒ Structure Lifts

LEO 
ELEVATORS



LEO ELEVATORS is known as the Best Lifts Installation and Maintenance Organisation situated at Hyderabad, having qualified and Expert staff giving quality services related to Lifts (Elevators) Design, Supply, Erection, Modification and Maintenance of Elevators of any make and type any where in the state.

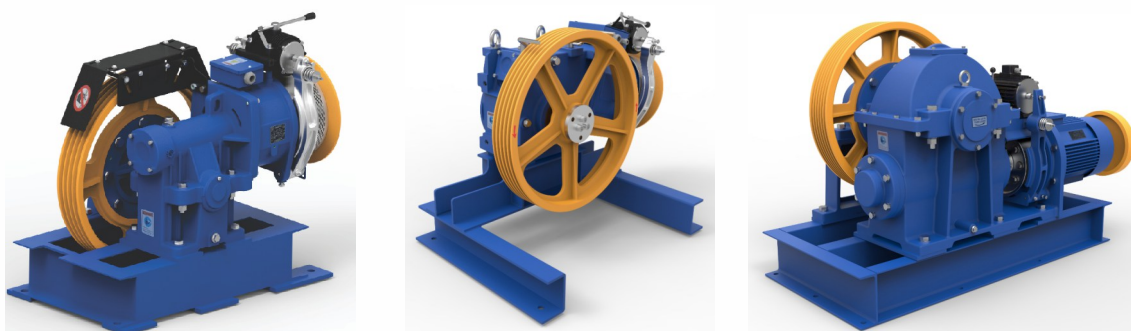
We have proved ourselves in customer satisfaction by providing elevators at an Economical price with all the work guaranteed. We are insured, safe and reliable. We provide inspection service by our technical persons and keep upto date information and guide the customer by explaining the safety instructions. We install the lift and take all the maintenance charge at customer request.

A phone call is enough for us, our technical people will be available at your service and assistance will be provided with no delay. Given below are few samples and their information.

Traction Elevators

Traction elevators are the most common type of elevators. Elevator cars are pulled up by means of rolling steel ropes over a deeply grooved pulley, commonly called a sheave in the industry. The weight of the car is balanced by a counterweight since 1900. Sometimes two elevators are built so that their cars always move synchronously in opposite directions, and are each other's counterweight.

Now a days, some traction elevators are using flat steel belts instead of conventional steel ropes. Flat steel belts are extremely light due to its carbon fiber core and a high-friction coating, and does not require any oil or lubricant. Because of these qualities, elevator energy consumption in high-rise buildings can be cut significantly. Some elevator manufacturers have use this technology such as Otis (Gen2's polyurethane belts), Schindler (Suspension Traction Media for both 3300 and 5500 series), and Kone (UltraRope).

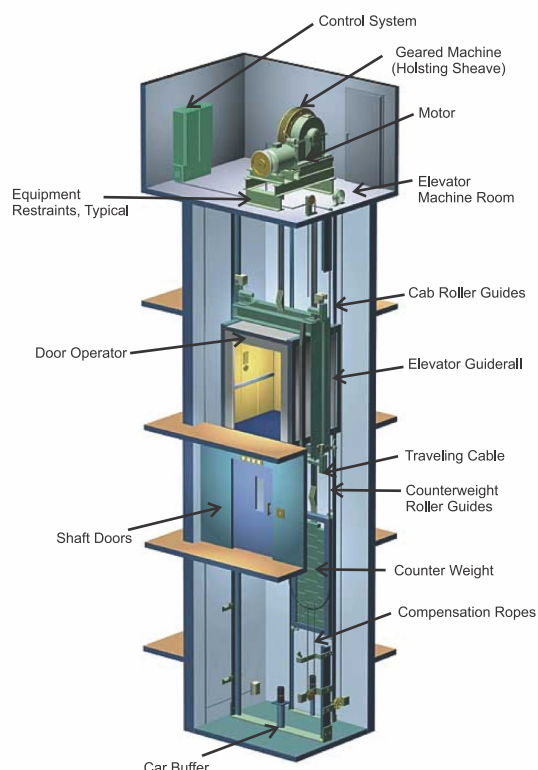


Compact Traction Models

Traction Features

- ◆ Ranger of Speed
- ◆ High Performance
- ◆ Smooth & Efficient
- ◆ Accurate Leaving Precision
- ◆ Motor Gare specification

Motor Gear Specification	
Hp	5 - 20 hp
Max. Static Load	3000 to 8200 kg
Gear Ratio	1/46, 1/52, 2/57
Power Range (kW)	3.7 to 18.65
Breake (Voltage)	110 V.D.C., 220 V.D.C.
Sheave Range	530 to 770
Weight of Machine	290 Kg to 780 Kg





Hydraulic Elevators System

Features :

- ◆ Smaller space Requirements in the shaft
- ◆ Flexible Machine room Location
- ◆ A great Deal of design freedom for architects
- ◆ No machine room
- ◆ Elevator design can be customized
- ◆ Power save 50%
- ◆ No need for reinforcement. The cylinder that lifts the elevator cab is supported by the ground underneath

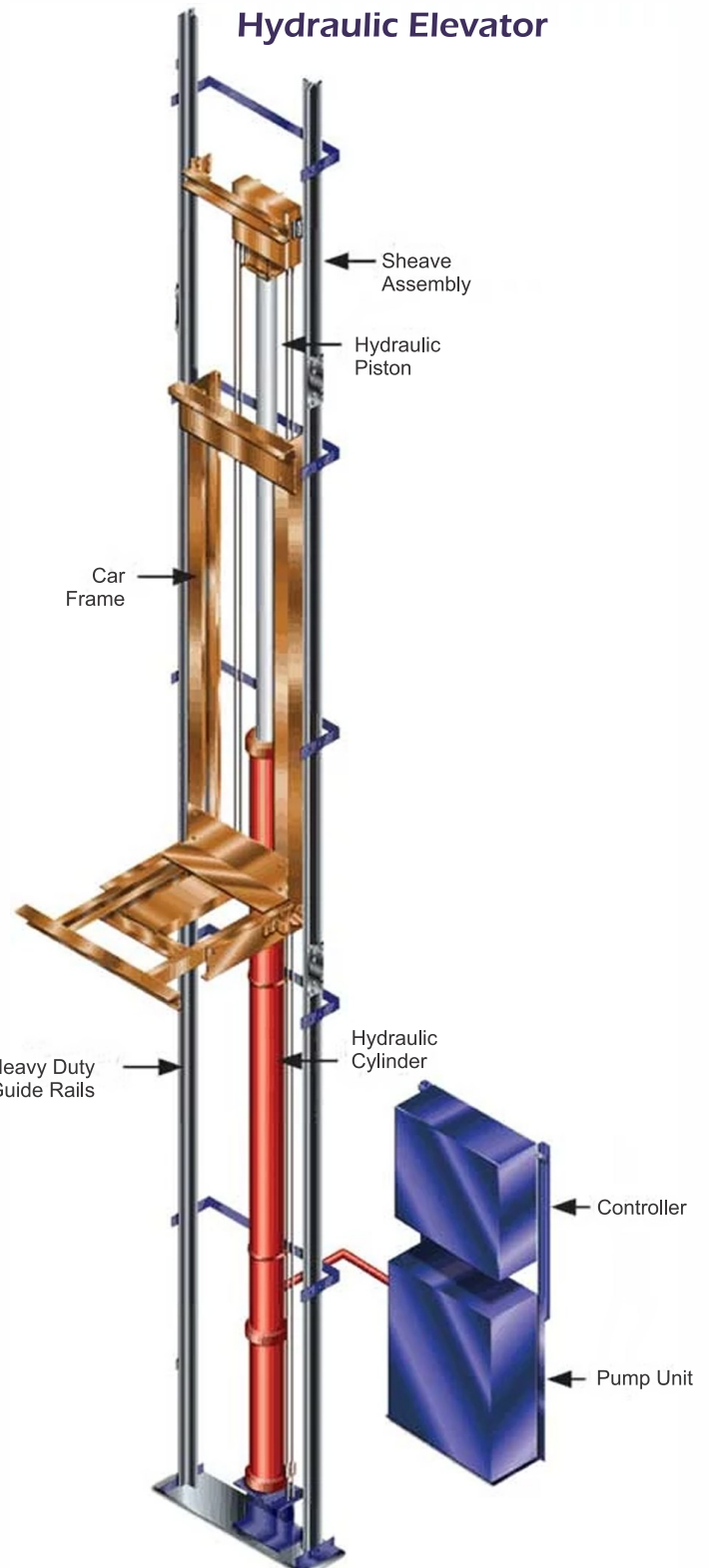
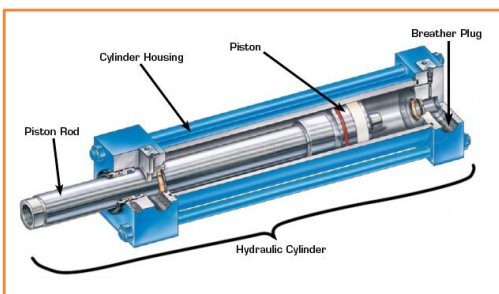
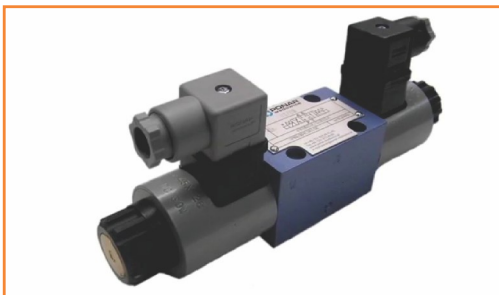
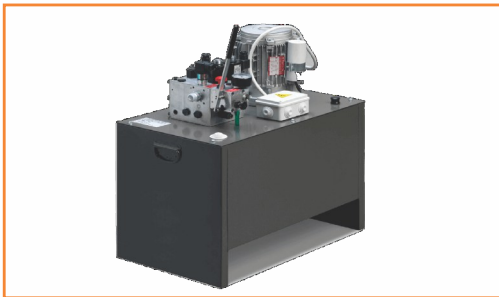


OMAR

MORIS
MORIS HELLAS



Hydraulic elevators are elevators which are powered by a piston that travels inside a cylinder. An electric motor pumps hydraulic oil into the cylinder to move the piston. The piston smoothly lifts the elevator cab. Electrical valves control the release of the oil for a gentle descent.





Machine Roomless Lift (MRL)

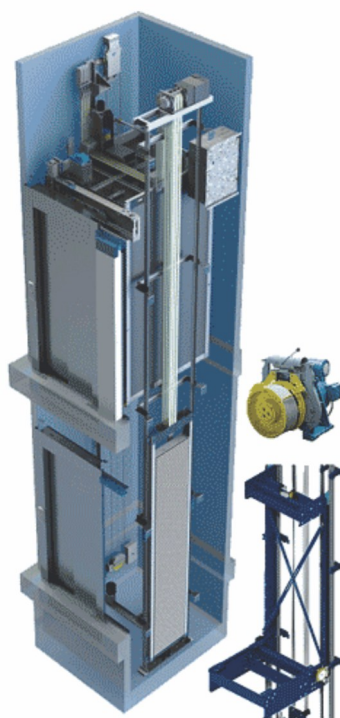
PMSM Gearless Machines for Passenger Lift

Machine Room Less is a new-generation gearless machine for elevators powered by a permanent magnet synchronous motor. Compact modular designs, light weight and low operating noise levels make it especially suitable for machine room-less applications.

Real saving in energy consumption (up to 30%), and in space and routine maintenance requirements, contribute to a significant reduction in cost of ownership. The gearless machine, configured with the variable frequency drive and our good elevator experience, is an unbeatable value proposition.

Features :

- ◆ Suitable for elevators without machine room
- ◆ Energy saving up to 30%
- ◆ Low noise
- ◆ No oil spillage problems
- ◆ Key components are imported
- ◆ Outstanding torque & cogging characteristics



Single Phase MRL Motor
Capacity Upto 6 Persons only

Benefits of MRL Lifts

- ☛ It merges relax into design
- ☛ It saves the construction cost
- ☛ It perfects the design style
- ☛ It prolongs the elevator life

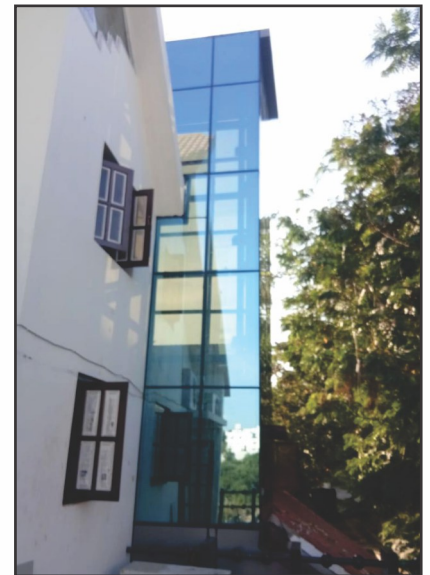


Three Phase MRL Motor
Capacity 5 to 20 Persons

CAPACITY		LIFT WELL		CABIN		CL OPENING
PER	KGS	W	D	W	D	E
4	272	1400	1300	800	900	600
6	408	1600	1500	1000	1100	700
8	544	1700	1650	1100	1300	800
10	680	1900	1750	1300	1350	800



STRUCTURE ELEVATORS



Structure Elevators - Vertical Transport System

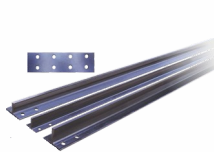
A steel structure, called the sling, extends down the sides of the car from the crosshead and cradles the floor, or platform. ... The guide rails are also steel and are attached to the interior walls of the elevator shaft which runs from the top of the building to the bottom



Material Used for Structure Elevators
100 x 100 Sq Tubes, 60 x 40 Sq Tubes and
50 x 50 Sq Tubes with 4 mm Thickness
Quality Material for human safety



SPARE PARTS / ACCESSORIES



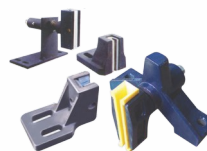
Car & Counter Rail



Spring Buffers



Suspension Spares



Guide Shoe



Over Speed Governor



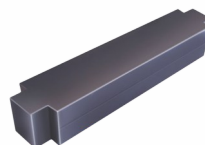
Diverter Pulley



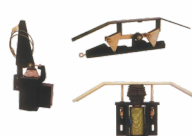
Car Frame



Counter Weight Frame



CRC Counter Weight



Retiring Cam



Bracket

Integrated Controller



CONTROL PANELS



Micro Processor Controller



Automatic Rescue Device (ARD)



ELEVATOR BUTTON SYSTEMS





CABINS



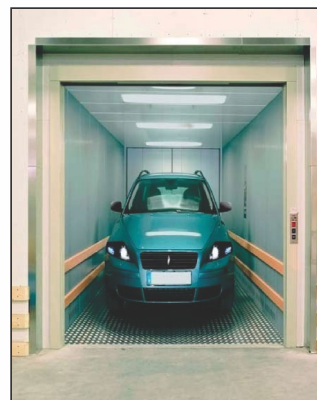
SS CABIN



MS CABIN



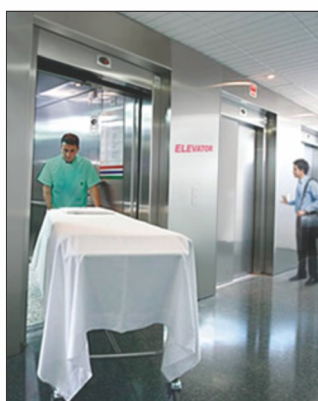
SS GLASS CABIN



CAR CABIN



GOODS CABIN



HOSPITAL CABIN



MS DESIGN CABIN



GLASS DESIGN CABIN

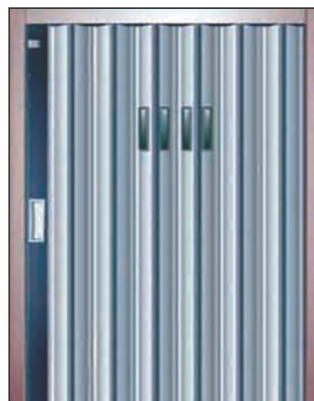
DOORS



COLLAPSIBLE GATES



TELESCOPIC DOORS



SHUTTER DOORS



MS DOORS



TELESCOPIC SS DOORS



SS SWING DOORS



AUTO GLASS DOORS



AUTO DOORS



Salient Features

- ◆ Battery Operated Emergency Light
- ◆ Battery Operated Emergency Alarm
- ◆ Anti Skid PVC Mat Flooring
- ◆ Director & Position Indicators with SS Hairline Finish
- ◆ Operating Panel
- ◆ Cabin Root fitted with Fan & LED Spot Lights
- ◆ M.S or S.S. Door Frames at All Landings
- ◆ M.S or S.S. Cabin Provided
- ◆ Handrail on Rear Panels
- ◆ Free Service for First One year
- ◆ Automatic Fan
- ◆ Floor Annunciator
- ◆ Mp3 Music System for Auto Doors

Safety Features

- ◆ Over Speed Governor (OSG)
- ◆ Automatic Rescue Device (ARD)
- ◆ Final Limit Switches
- ◆ Emergency Light
- ◆ Full Length infrared Door Sensors
- ◆ Spring Buffer
- ◆ Progressive Safety Gear
- ◆ Device for Door locking Landing Door



New Lift Installation • Maintenance • Technical Trouble Shooters

LEO 
ELEVATORS

3-4-26, Near Srinivasa Kalyana Mandapam,
 L.B. Nagar, Hyderabad - 500 074.
 Cell: 9515426302, 8886661889,
 8886661834, 9000081396.
 E-mail : leoelevators@gmail.com